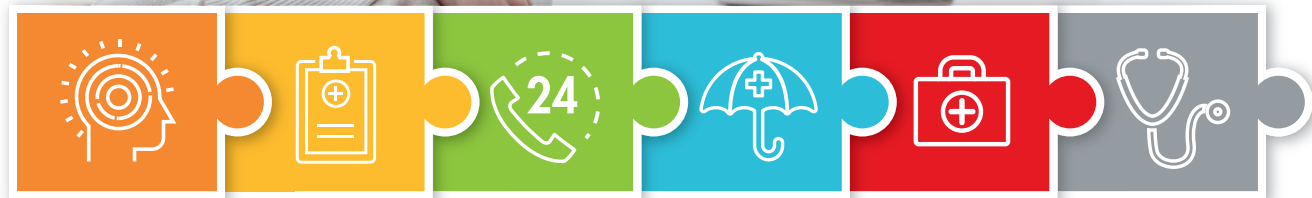


## Why Choose HealthConnector?

### HealthConnector offers you:

- Value-added support including an online Health Risk Assessment and online Cognitive Behavioural Therapy through Homewood Health. – included, free-of-charge to all Equitable Life group benefits plans;
- Comprehensive additional services to complement your health and wellness strategy;
- Flexibility to customize your plan to your employees' unique needs;
- Easy access for your employees;
- Simplified billing; and
- Peace of mind in providing a health and wellness solution that will truly impact both your employees' well-being and your bottom line.

Talk to your advisor or Equitable Life Group Account Executive to learn more about our Equitable HealthConnector solutions and help your employees learn how to live well every day.



## Works for me.™

Canadians have turned to Equitable Life since 1920 to protect what matters most. We work with independent advisors across Canada to offer individual insurance, savings and retirement and group benefits solutions to meet your needs.

Equitable Life is not your typical financial services company. We have the knowledge, experience and ability to find solutions that work for you. We're friendly, caring and interested in helping. And we're owned by our participating policyholders, not shareholders, allowing us to focus on your needs and providing you with personalized service, financial protection and peace of mind.



One Westmount Road North,  
Waterloo, Ontario N2J 4C7  
Visit our website: [www.equitable.ca](http://www.equitable.ca)

© denotes a registered trademark of The Equitable Life Insurance Company of Canada unless otherwise indicated.

Homewood Health is a registered trademark of Schlegel Health Care Inc.  
FeelingBetterNow is a registered trademark of Mensante Corporation  
CAREpath Navigation System is a registered trademark of CAREpath Inc.  
WorldCare Consortium is a registered service mark of WorldCare limited

1732|2019/07/08|

Equitable  
HealthConnector®

HEALTH AND WELLNESS RESOURCES







## Health and Wellness resources to keep you and your employees healthy and productive

Our comprehensive Equitable HealthConnector services provide you with flexible options to help your employees stay healthy and productive. Services are available in any combination to easily customize to the unique needs of your employees. Whether it's advice for dealing with the demands of a busy household or support when diagnosed with a serious illness, HealthConnector can help with affordable tools and resources that benefit both you and your employees. Here's how:

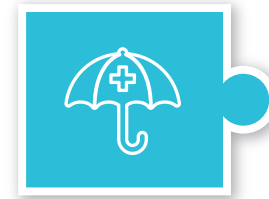
### Equitable HealthConnector can help you:

- Decrease the impact of health-related absences and claims;
- Improve productivity and overall workplace health;
- Strengthen retention and recruitment efforts; and
- Manage the overall cost of providing group coverage.

### Equitable HealthConnector can help your employees

- Cope with everyday challenges related to work, home and family responsibilities;
- Bring their best game to work every day;
- Get the support they need after being diagnosed with a serious illness; and
- Identify their mental health risks and connect with the resources they need.

## Value-added resources included in all group benefits plans



### Equitable HealthConnector Portal

Whether your employees are dealing with a medical issue, need parenting advice or want help finding a doctor, Equitable HealthConnector is their gateway to the health and wellness resources and information they need. Plan members can use HealthConnector to:

- Access up-to-date health articles and tools;
- Find resources to assist with making more informed medical and lifestyle decisions;
- Learn how to cope with everyday issues;
- Find a healthcare practitioner; and
- Search for information about prescription drugs.

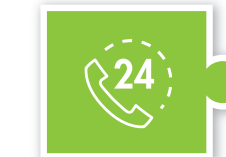


### Homewood Health® Online

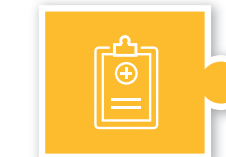
Homewood Health Online provides online information, tools and resources to help employees cope with everyday issues. This includes an online Health Risk Assessment, and access to i-Volve, an innovative Cognitive Behavioural Therapy program that helps employees seeking support with anxiety or depression.

- Family** Topics range from how to cope with a divorce, dealing with grief or loss of a loved one and parenting.
- Health** Provides resources to address both physical health (with dedicated resources for children and seniors) and mental health.
- Life** Whether it's dealing with a crisis, planning for retirement or just getting through the day, Homewood Health Online can provide tools and resources to help.
- Money** Buying a new car? Need help saving money? Your employees can count on the support available through Homewood Health Online.
- Work** Resources are available for both managers and employees to help ensure your team stays motivated and productive.

## Additional HealthConnector services\*



**Homewood Health Employee and Family Assistance Program (EFAP):** Integrates a full EFAP program with work-life and wellness services and provides access to support from a national network of counsellors and clinical professionals. Whether it's face-to-face, by phone, email, chat, video, or self-directed treatment programs, employees receive the most appropriate, most timely support for the issue they're dealing with.



**WorldCare Medical Second Opinion (MSO)™:** A MSO service that provides expert, timely e-consultations for serious illnesses and delivers highly specialized and personalized electronic MSOs from the best medical centres in North America.



**FeelingBetterNow®:** A comprehensive, medically approved, confidential, anonymous, and interactive online mental health care management system. It helps employees and their eligible dependents identify and talk to their healthcare providers about their mental health concerns. It assists with early diagnosis, treatment and follow up for common and often debilitating mental health conditions. It also includes a huge library of evidence-based tools for mental health self-management.



**The CAREpath Navigation System™:** A cancer assistance program that provides access to an experienced team of oncology nurses and doctors who provide explanations of tests, diagnosis and treatments, reducing the physical and emotional impact on employees and their families.

\*Additional HealthConnector services are billed as part of your monthly premium statement.

